

# TECHNICAL DATA

## KÄHR'S LUXURY TILES

### XPRESSION - DRY BACK WOOD AND STONE



**Dry back Xpression Stone**  
7" x 48" x 0.08" (177.8 x 1219.2 x 2 mm)



**Dry back Xpression Wood**  
20" x 20" x 0.08" (500 x 500 x 2 mm)

#### PRODUCT

Xpression	EN 14565	PVC- and plasticizer-free Enomer® plank and tile
Application	EN ISO 10874	23/34/43



#### SPECIFICATION

Thickness	EN ISO 24346	~0.08" (2.0 mm)
Weight	EN ISO 23997	~0.70 lbs / sq ft (3400 g/m <sup>2</sup> )
Plank size	EN ISO 24342	7" x 48" x 0.08" (177.8 x 1219.2 x 2 mm)
Tile size	EN ISO 24342	20" x 20" x 0.08" (500 x 500 x 2 mm)

#### PRODUCT PROPERTIES

PROPERTY	TEST METHOD	RESULT
Indoor air certifications		M1, Floorscore, Austrian Ecolabel
Electrostatic Propensity	AATCC 134	< 2.0 kV
Slip Resistance DCOF (Wet)	ANSI B 101.3	Acceptable
Slip Resistance DCOF (Dry & Wet)	ASTM C 1028	≥ 0.7 Dry / Wet
Abrasion Resistance w weight loss	ASTM D 4060	~ 0.05 g
Castor Chair Test 25.000 cycles	EN 425	Pass
Critical Radiant Flux	ASTM E 648	≥ 0.45 W/cm <sup>2</sup> Class 1
Smoke Density	ASTM E 662	≤ 450 Flaming & Non-flaming
Flexibility	ASTM F 137	Pass (1" mandrel)
Resistance to Heat	ASTM F 1514	Pass
Resistance to Light	ASTM F 1515	Pass
Short Term Indentation	ASTM F 1914	< 0.005" (6%)
Chemical Resistance	ASTM F 925	Excellence
Static Load Limit	ASTM F 970	Pass
Static Load Limit	ASTM F 970 Mod	2000 psi





COLLECTION  
KÄHRS LUXURY TILES

XPRESSION - DRY BACK WOOD

177,8 x 1219,2 x 2 mm (7" x 48" x 0,08")



1511 Xpression Almond



1504 Xpression Smoked



1512 Xpression Dune



1514 Xpression Chestnut



1503 Xpression Natural



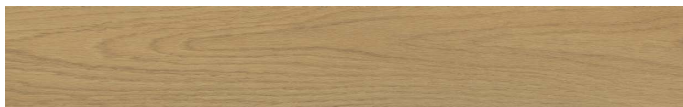
1515 Xpression Charcoal



1513 Xpression Hazel



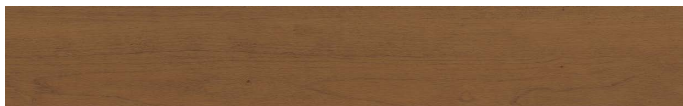
1501 Xpression Warm Grey



1516 Xpression Golden Oak



1502 Xpression Cool Grey



1519 Xpression American Cherry



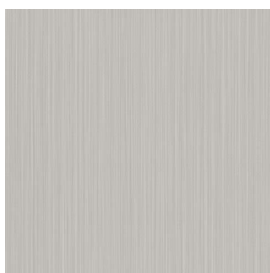
1505 Xpression Dark Grey



1517 Xpression French Walnut

XPRESSION - DRY BACK STONE

500 x 500 x 2 mm (20" x 20" x 0,08")



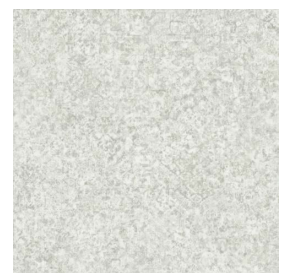
1531 Xpression Light



1542 Xpression Sand



1545 Xpression Slate



1551 Xpression Faded